



A1800-4x18-B35 & B40



A1801-4x18



A1800-4x22-B35 & B40

A1801-4x22

INSTALLATION A1800™ Series Filter

Optional Handle Installation Instructions



Glue sockets and pipe together using PVC Primer & Cement.

Socket end will twist lock as shown in photo.

New System Installation:

STEP 1

Locate the outlet of the septic tank.

Note: Make sure tank is installed level.

STEP 2

Remove the tank cover.

Solvent weld the outlet tee baffle onto the septic tank outlet pipe.

STEP 3

Insert A1801 cartridge into 4" tee baffle taking care that the security tab is facing the outlet opening in order to properly secure filter in place.

STEP 4

Security Tab

Existing System Installation

STEP 1

Locate the outlet of the septic tank.

STEP 2

Remove the tank cover and pump the tank if necessary to prevent any solids from escaping to the field when the cartridge is removed.

STEP 3

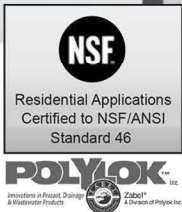
Before solvent welding (glueing), make sure that when installed the tee and filter will be centered under the access opening and that the filter is level.

If not attach additional pipe. Solvent weld the tee and pipe assembly to the 4" outlet pipe extending through the wall of the tank.

Note: Always clean and prime all pipe before solvent welding.

STEP 4

Insert the filter cartridge into the tee, making sure the filter cartridge is completely inserted into the tee.



Notes:

- If 4" PVC pipe does not extend into the tank, a plumbing flange may be used.
- The A1801 and A1801-HIP cartridges may be inserted into SDR 35 or Schedule 40 outlet tee baffles.
- The bottom gasket on the cartridge must be contained within the outlet baffle pipe, in order to create a seal with the surrounding pipe.
- If you have purchased a Zabel Smartfilter, additional installation instructions can be found in the Smartfilter Alarm System box.
- A riser to grade over the outlet access opening is recommended and may be required in certain states.
- If the filter can not be installed in the existing tank, it can be installed using a Zeus Basin System. In this case, the New System Installation instructions will be used.
- Filter material: white or natural = PVC, gray = ABS
- Performance: Maximum daily flow = 800 GPD
- Average reduction in TSS within 6 months of installation - 40% in typical residential wastewater.
- Minimum of 3" drop required in tank for proper SmartFilter operation

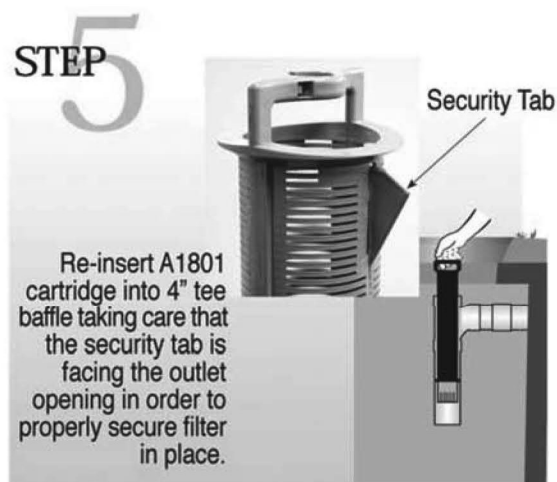
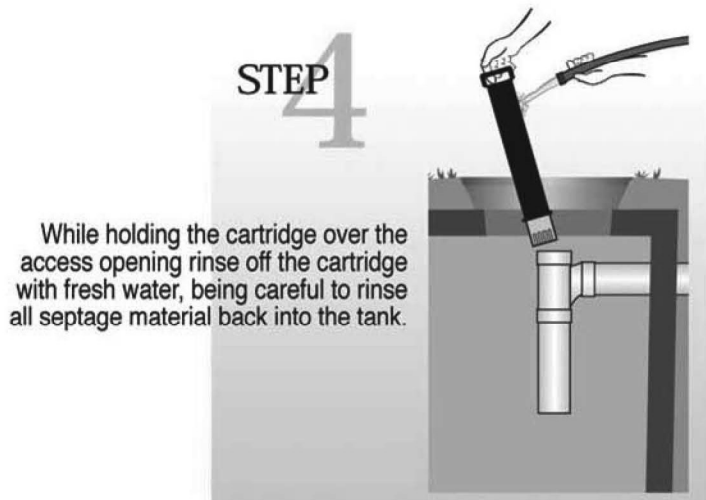
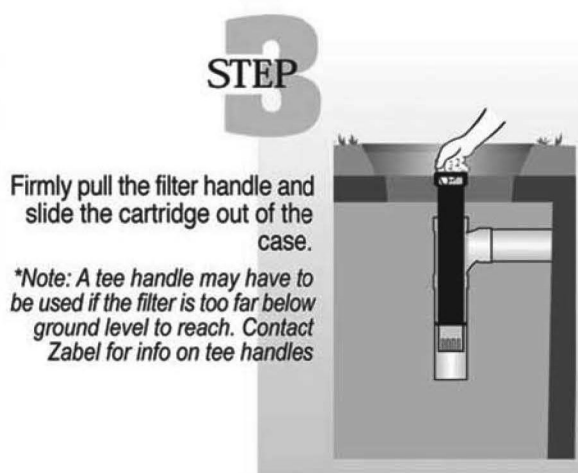
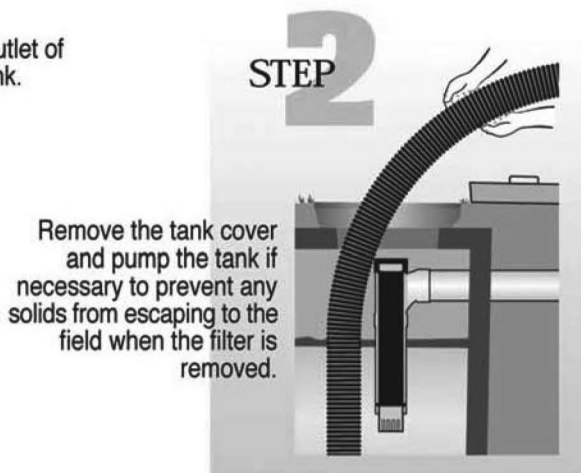
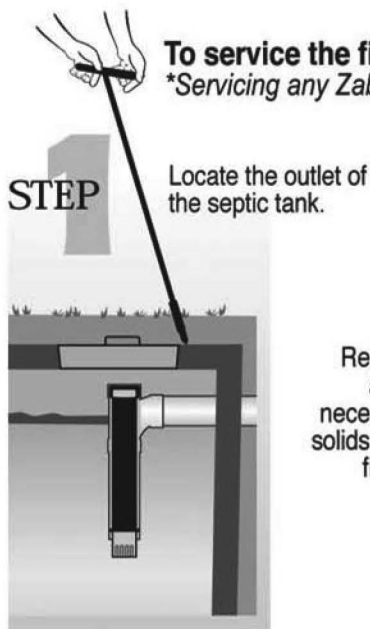


MAINTENANCE A1800™ Series Filter

The interval for servicing septic tanks is set by state and local code. Throughout the United States there is a wide difference of opinion on what this interval should be, but most regulatory agencies suggest two to five years. The Zabel® filter, which does not increase the frequency of servicing for the tank, should be cleaned when the septic tank is normally inspected and pumped. If your filter contains a SmartFilter® alarm, you will be notified by an alarm when the filter needs servicing.

To service the filter:

**Servicing any Zabel filter should only be done by a certified septic tank pumper or installer.*



Notes:

- If you have a Filtered Versa-Tee™ Model Filter, be sure and spray clean the outlet opening before replacing the Filter.

The product(s) shown are covered by the following patents:

Copyright 2003, Zabel Industries International, Ltd. All rights reserved

Product(s) covered by one or more U.S. and/or International patents. Other U.S. and International patents may be pending.

Call: 1-877-765-9565 Or Order Online: www.zabelzone.com



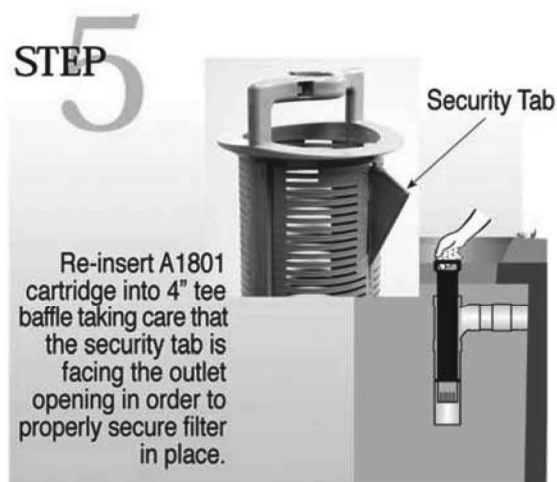
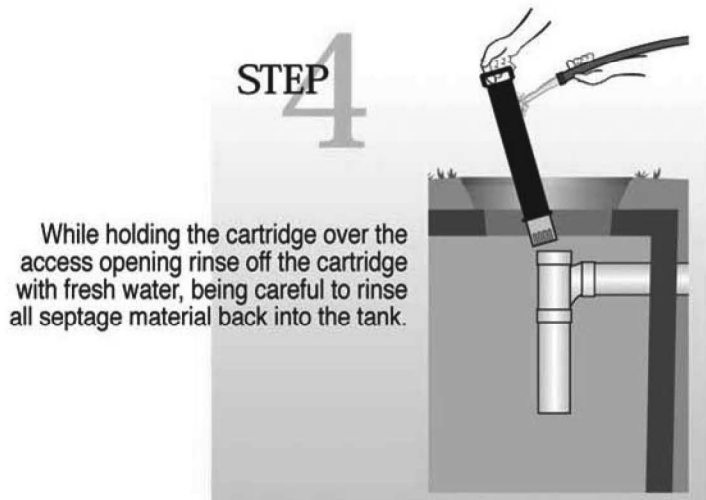
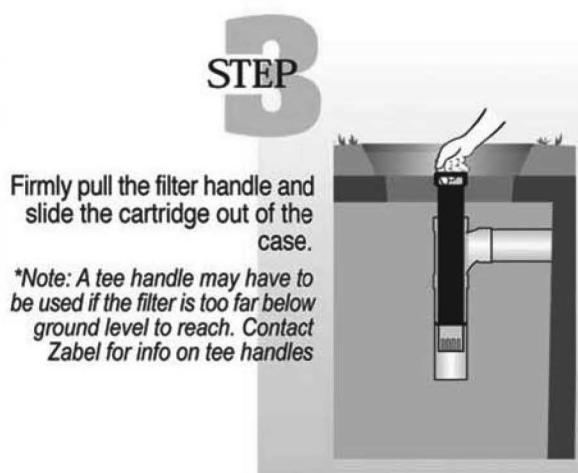
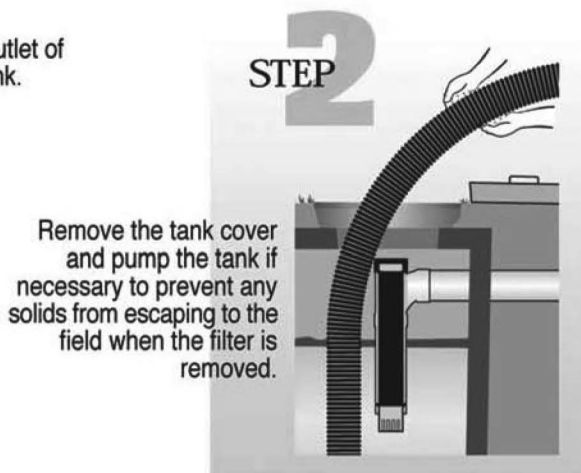
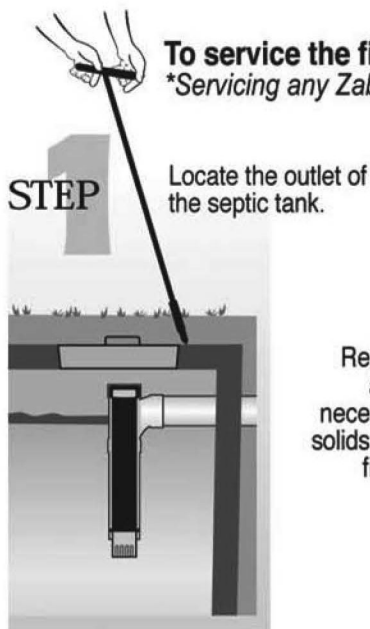


MAINTENANCE A1800™ Series Filter

The interval for servicing septic tanks is set by state and local code. Throughout the United States there is a wide difference of opinion on what this interval should be, but most regulatory agencies suggest two to five years. The Zabel® filter, which does not increase the frequency of servicing for the tank, should be cleaned when the septic tank is normally inspected and pumped. If your filter contains a SmartFilter® alarm, you will be notified by an alarm when the filter needs servicing.

To service the filter:

**Servicing any Zabel filter should only be done by a certified septic tank pumper or installer.*



Notes:

- If you have a Filtered Versa-Tee™ Model Filter, be sure and spray clean the outlet opening before replacing the Filter.

The product(s) shown are covered by the following patents:

Copyright 2003, Zabel Industries International, Ltd. All rights reserved

Product(s) covered by one or more U.S. and/or International patents. Other U.S. and International patents may be pending.

Call: 1-877-765-9565 Or Order Online: www.zabelzone.com

